

**ANALYSIS OF**  
**2014 YTD NOISE COMPLAINTS**  
**FOR**  
**EAST HAMPTON AIRPORT**

*October 30, 2014*

Prepared by Peter A. Wadsworth

# INTRODUCTION

---

## **22,700 COMPLAINTS FROM PLANENOISE**

*YTD 2014 (Jan. – Sept. 2014)*

*Robert Grotell created PlaneNoise Complaint System since April, 2012*

*Telephone, Email & Webmail*

## **22,350 FLIGHT OPERATIONS FROM VECTOR**

*YTD 2014 (Jan. – Sept. 2014)*

*Vector is Billing Company employed by the Town since April, 2012*

*Cameras, Flight Tracking & Staff Logs*

## **ORGANIZATION**

*Overview: Flight Ops & Complaints, Noise Index, Seasonality*

*Geography: Hamlets & Towns*

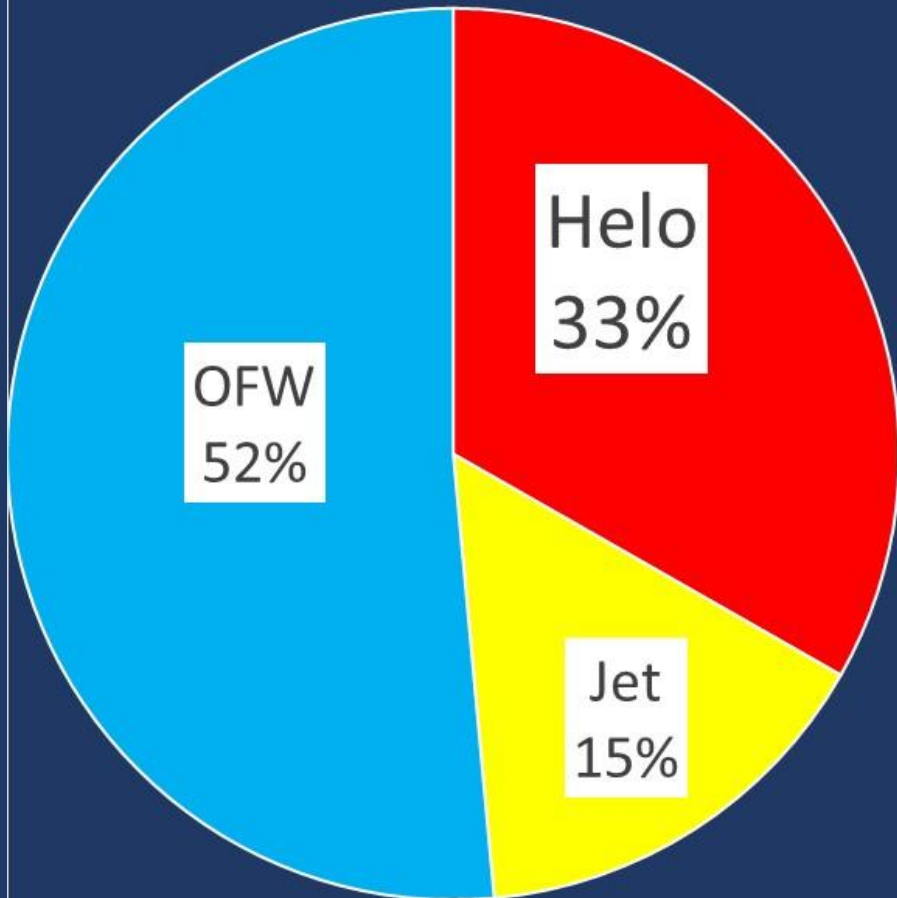
*Time: Hour of Day, Day of Week*

# FLIGHT OPS VS COMPLAINTS

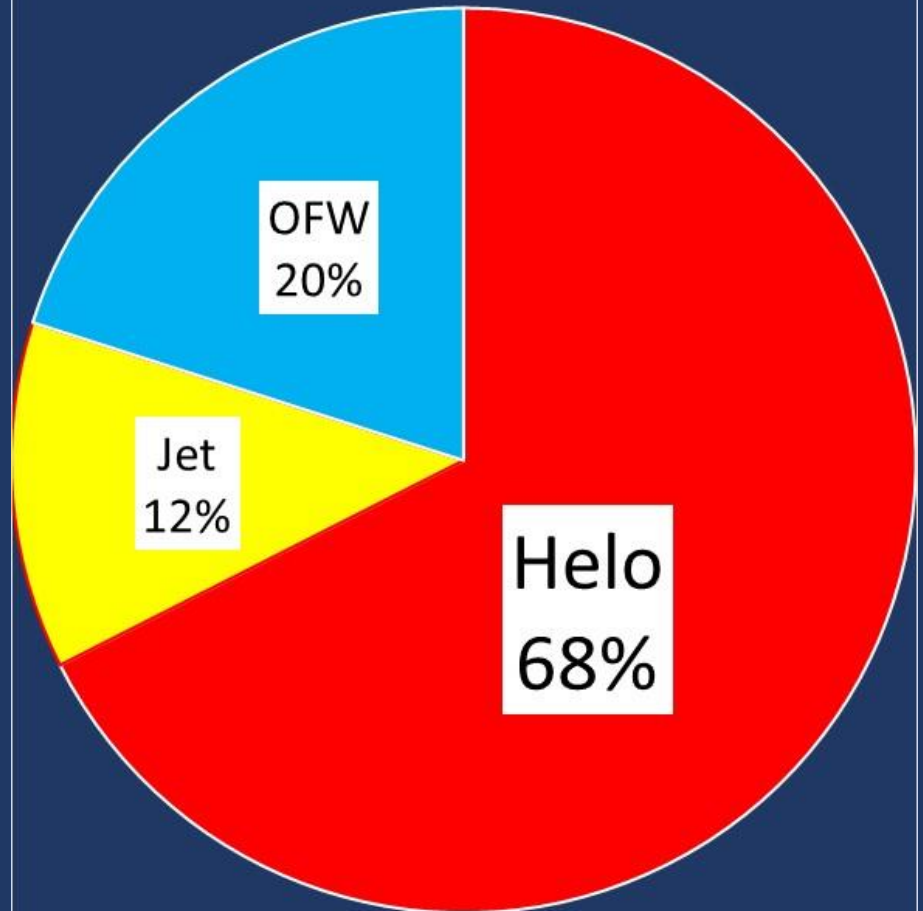
22,350 Flight Ops

22,700 Complaints

Flight Ops

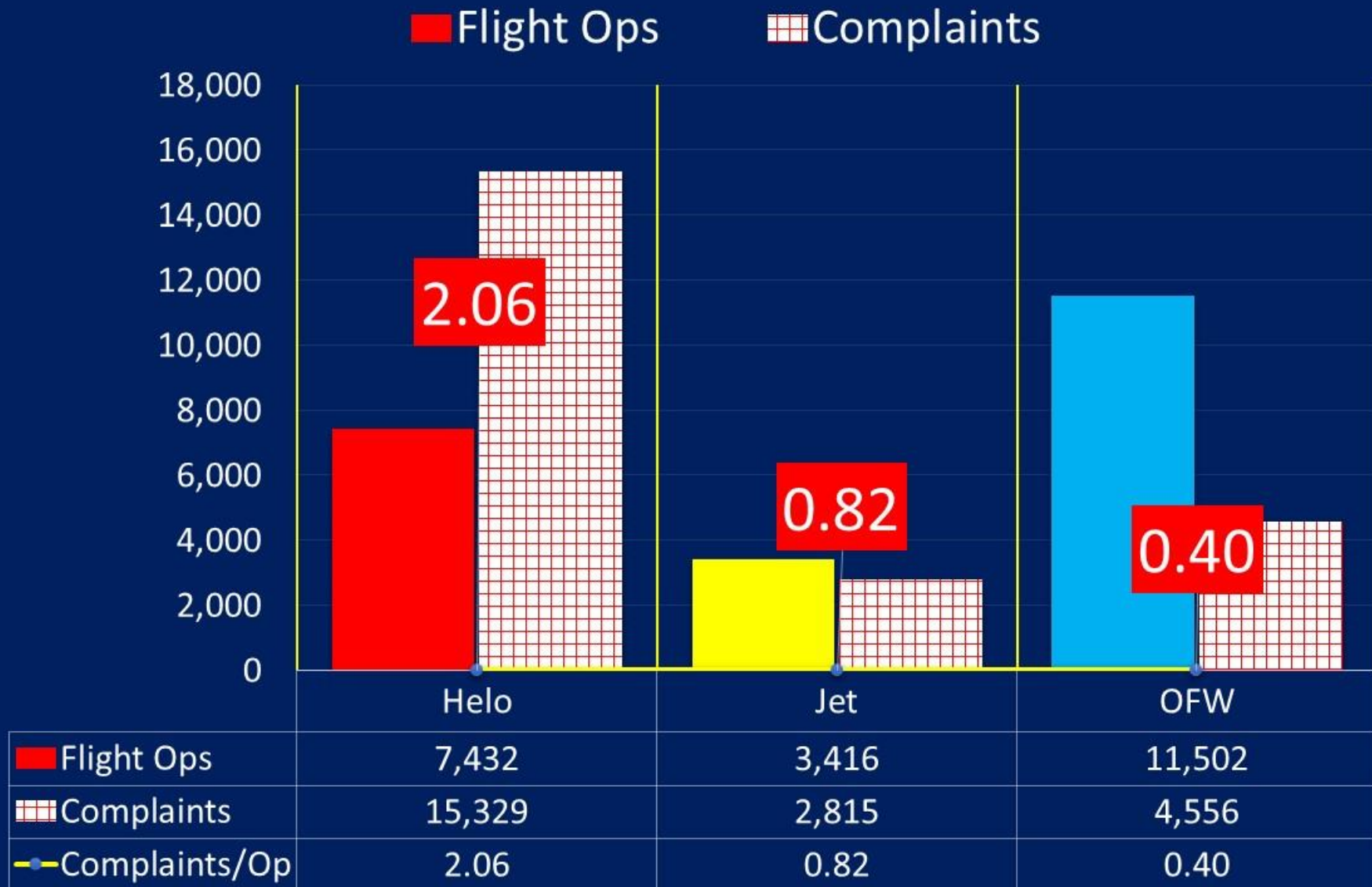


Complaints

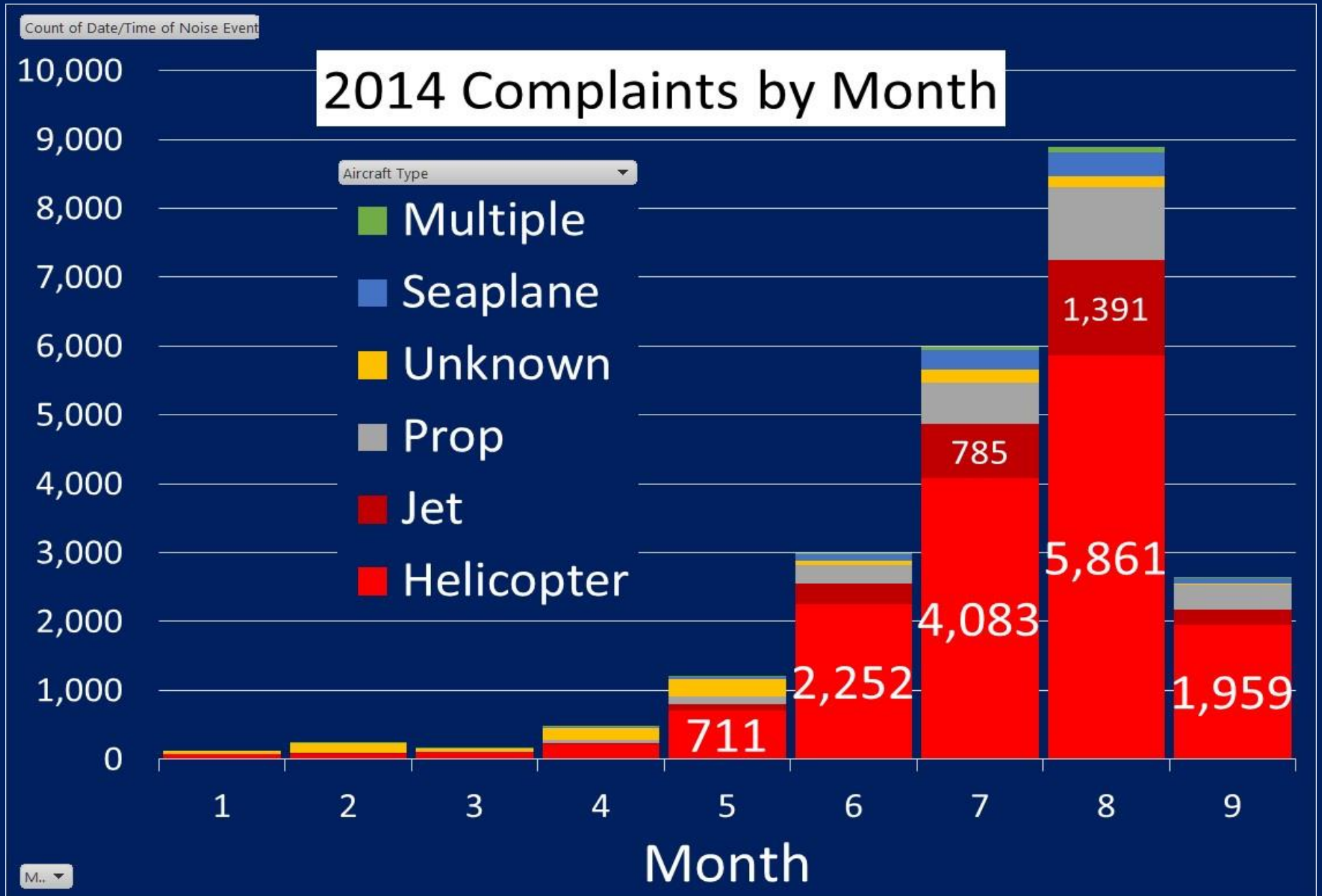


# COMPLAINTS PER FLIGHT OP BY TYPE OF AIRCRAFT

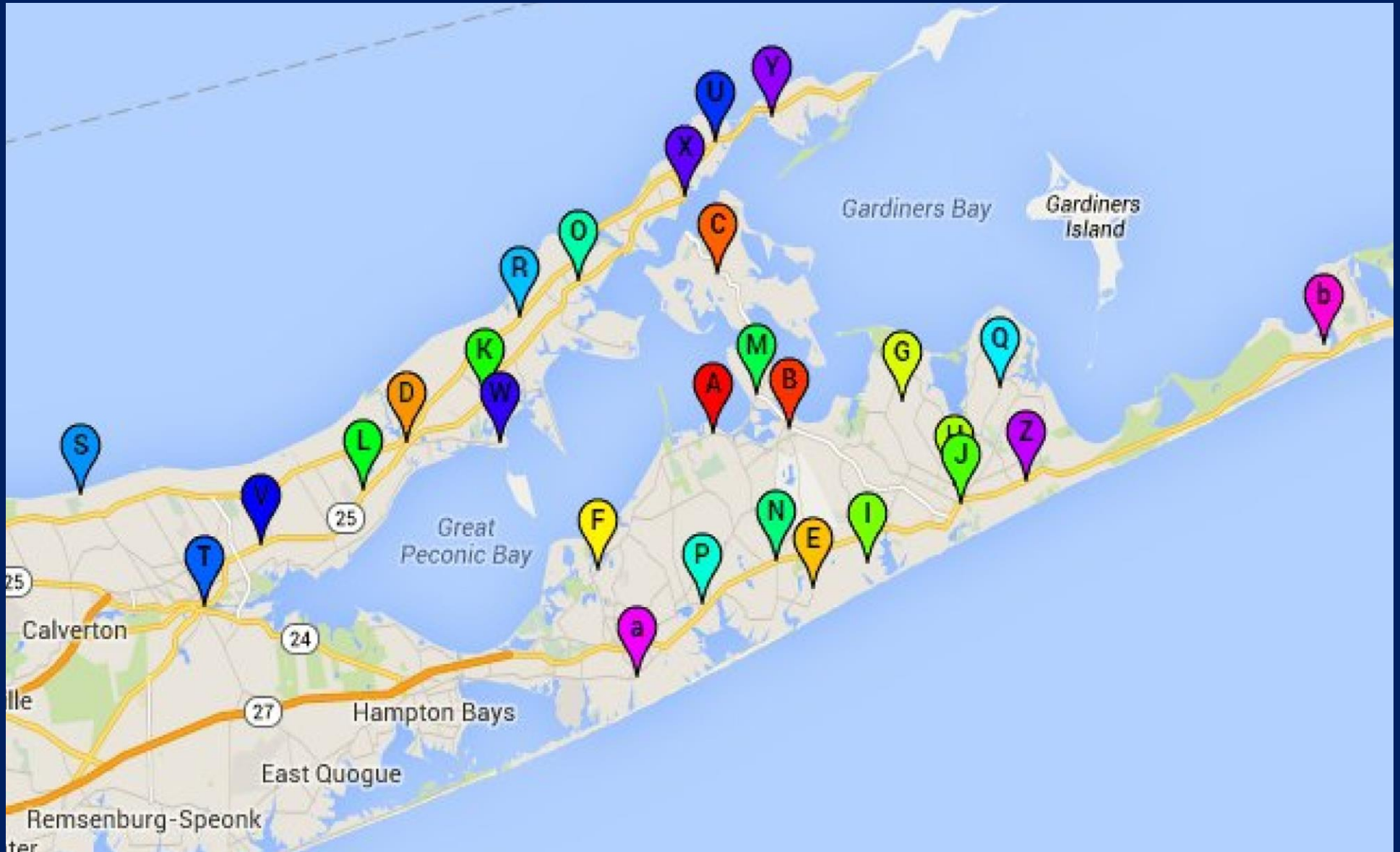
## Noise Index (Complaints/Flight Op)



# SEASONALITY

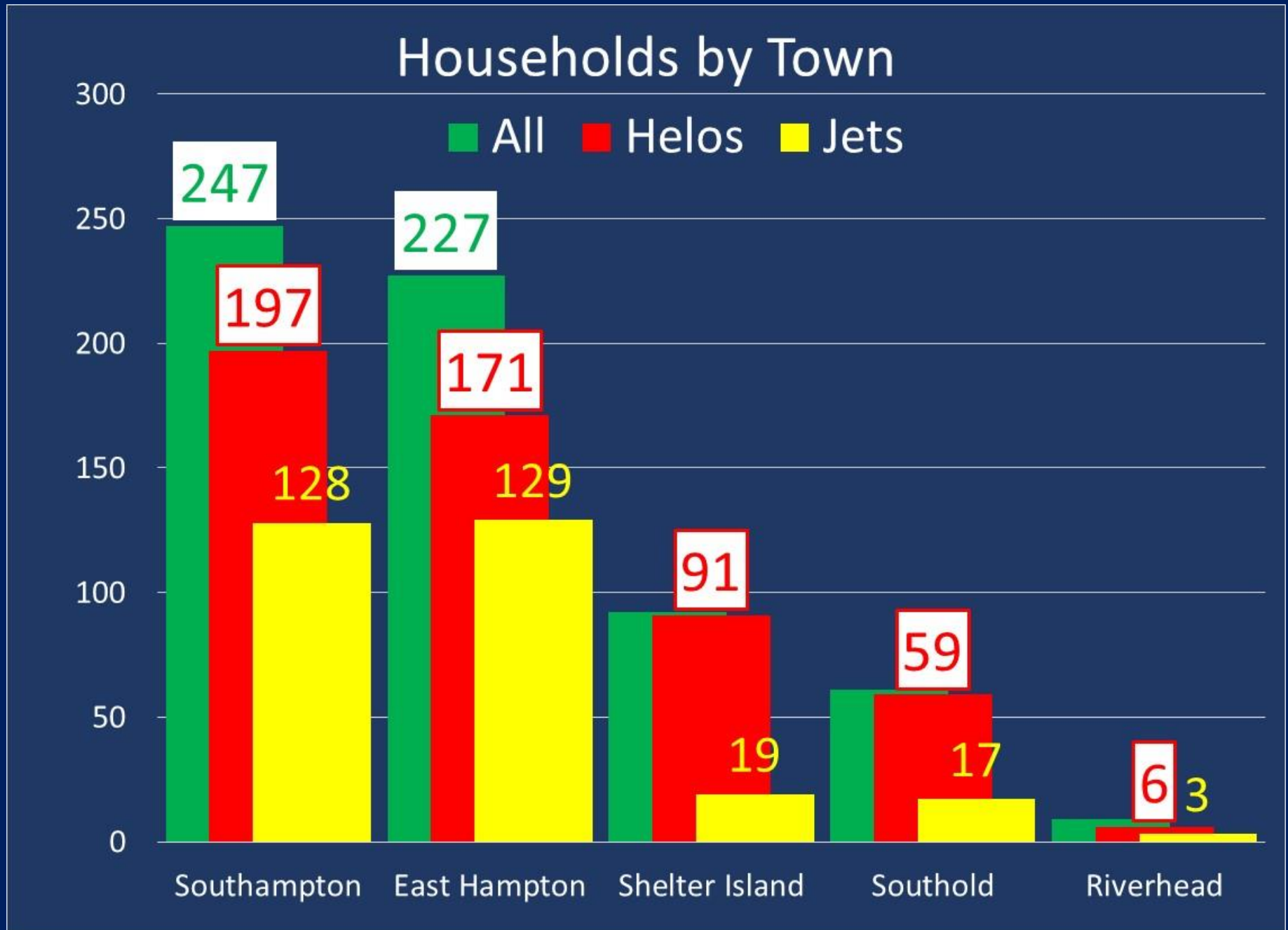


# GEOGRAPHY

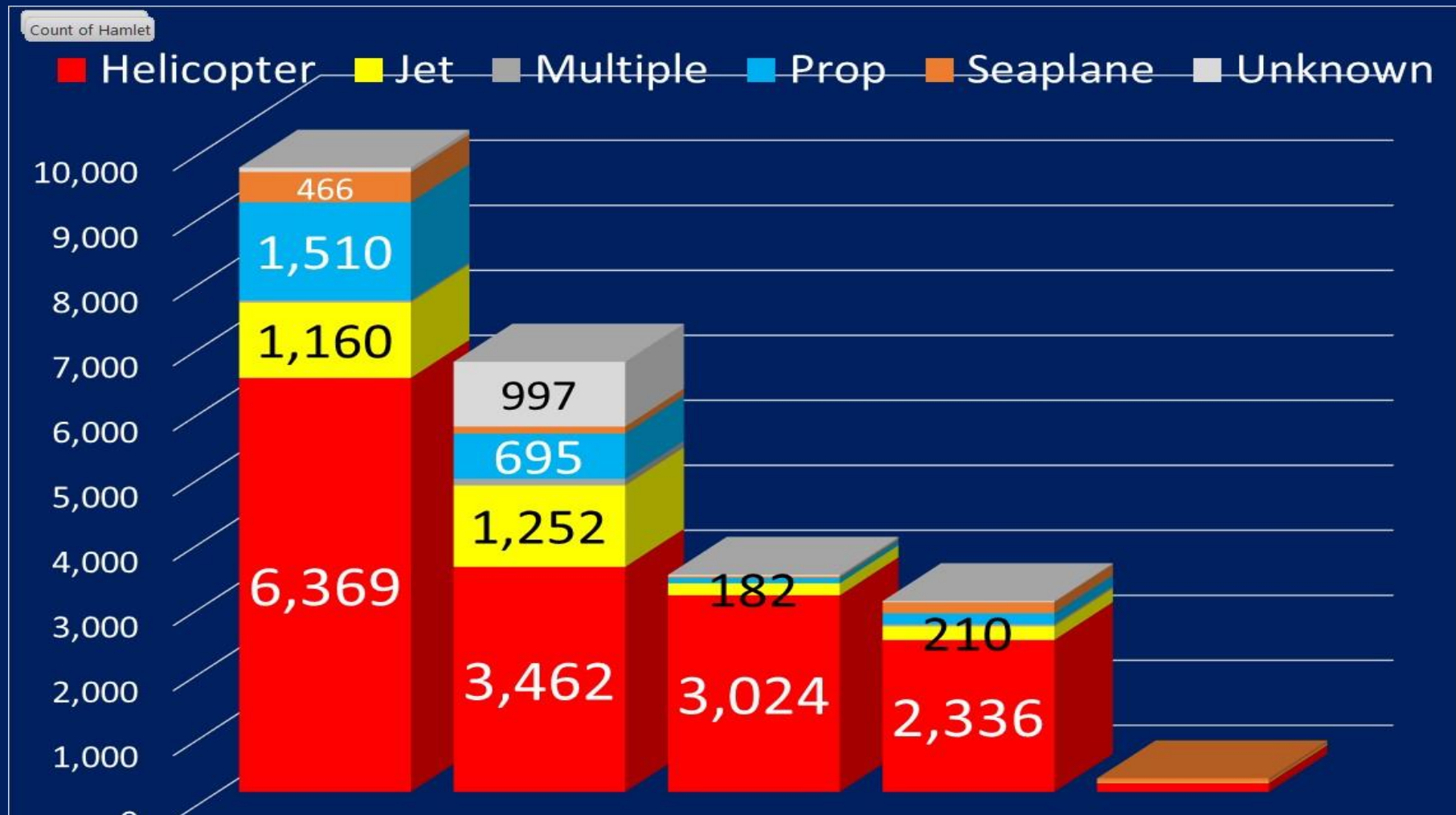


Color Code (most to least): red; orange; yellow; green; blue; purple; fuchsia

# HOUSEHOLDS BY TOWN



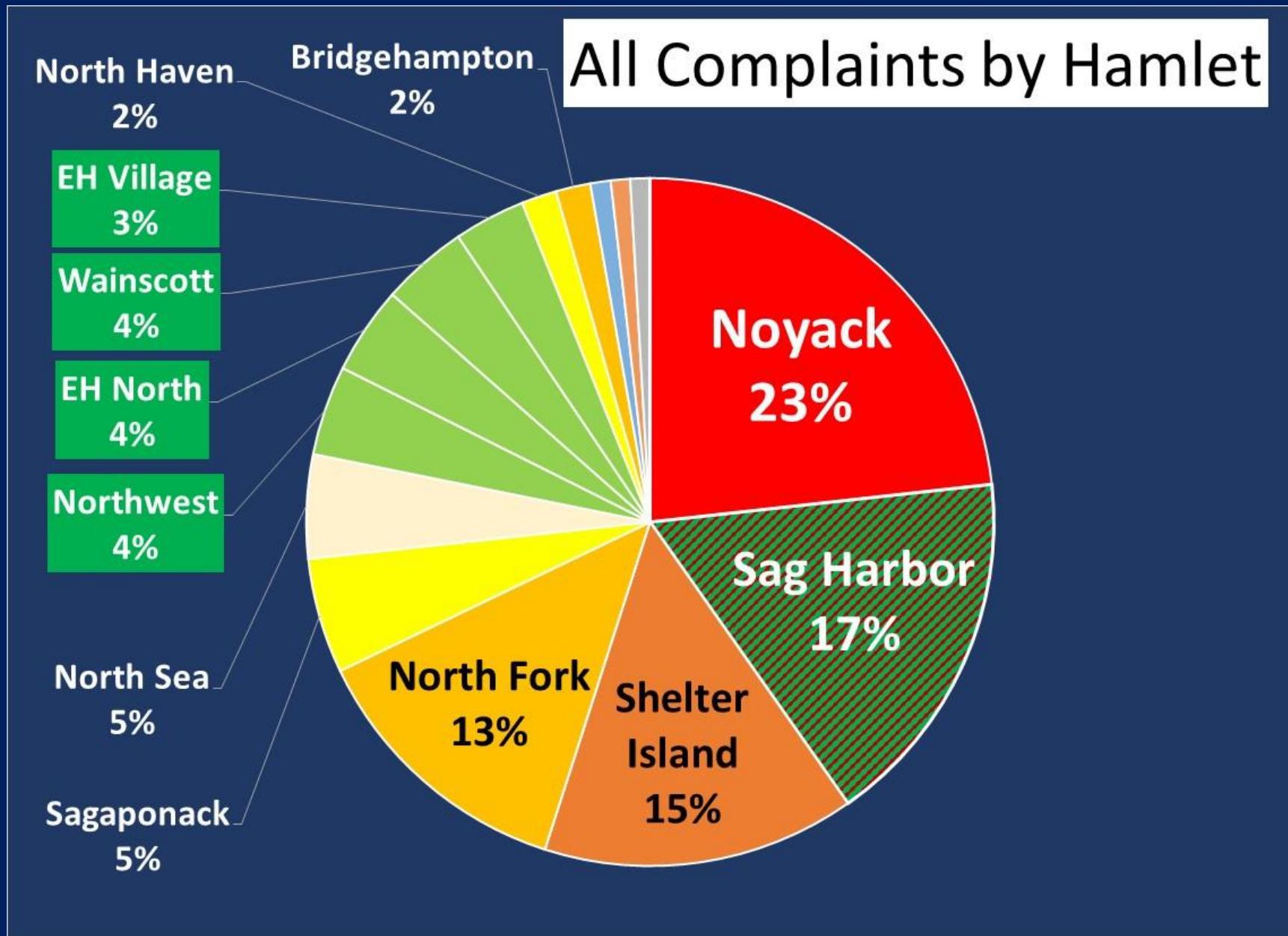
# COMPLAINTS BY TOWN



Southampton	East Hampton	Shelter Island	Southold	Riverhead
9,603	6,617	3,339	2,934	207
42.3%	29.1%	14.7%	12.9%	0.9%

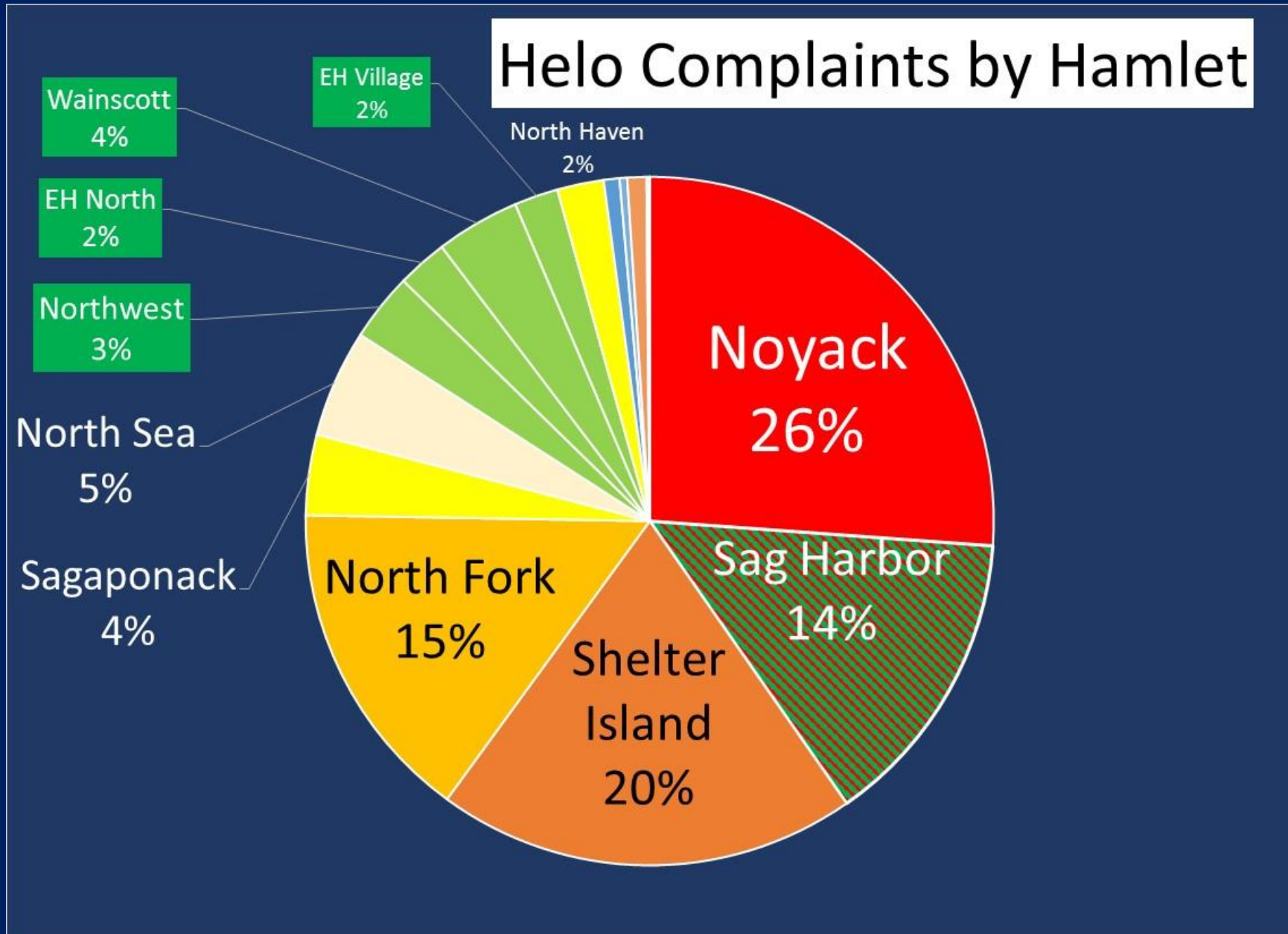


# TOP 4 HAMLETS/TOWNS: 68% OF ALL COMPLAINTS



\*12.5 % of all complaints come from the East Hampton portion of Sag Harbor

# TOP 4 HAMLETS/TOWNS: 77% OF HELICOPTER COMPLAINTS

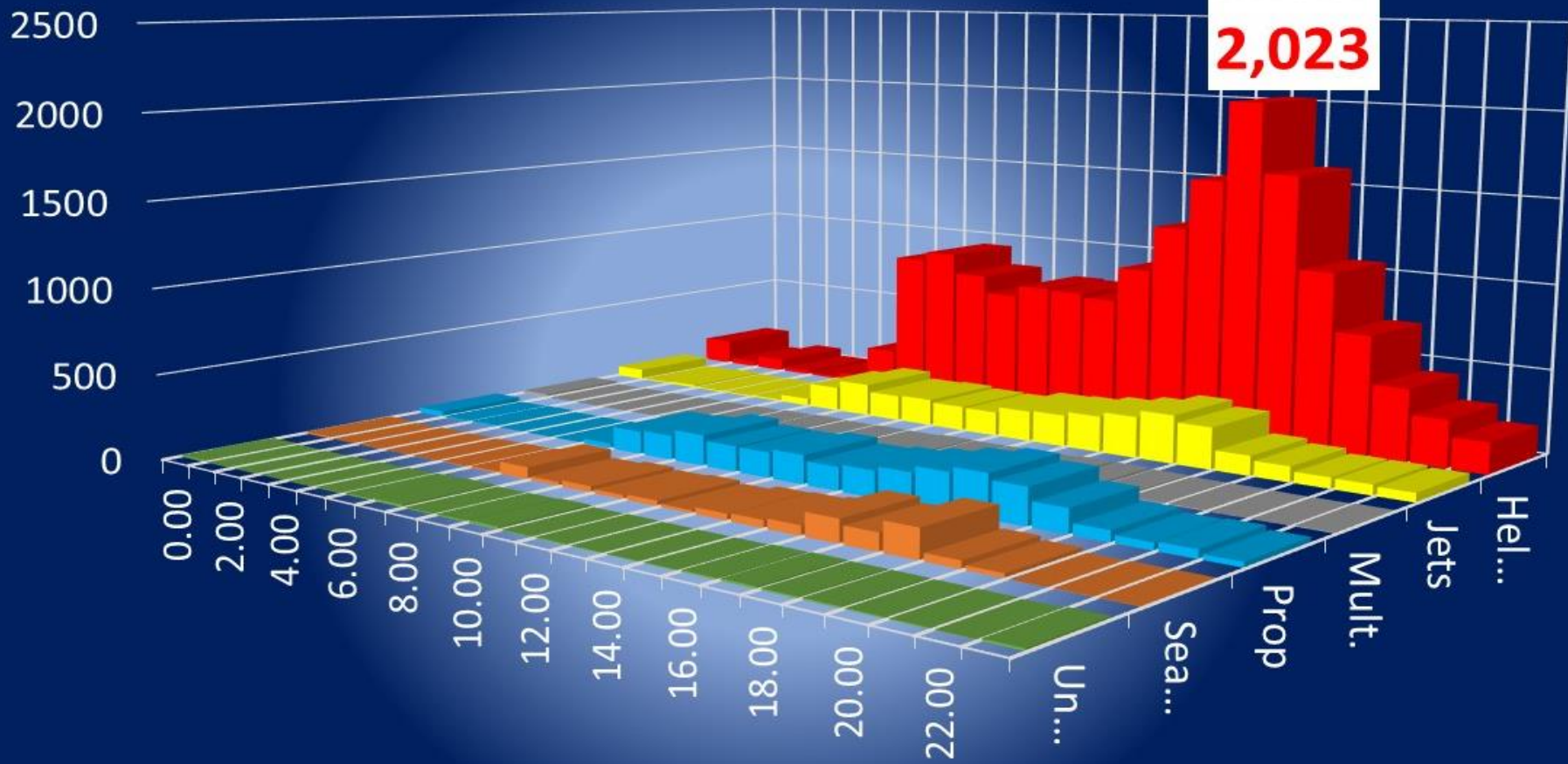


# TIME VARIATIONS

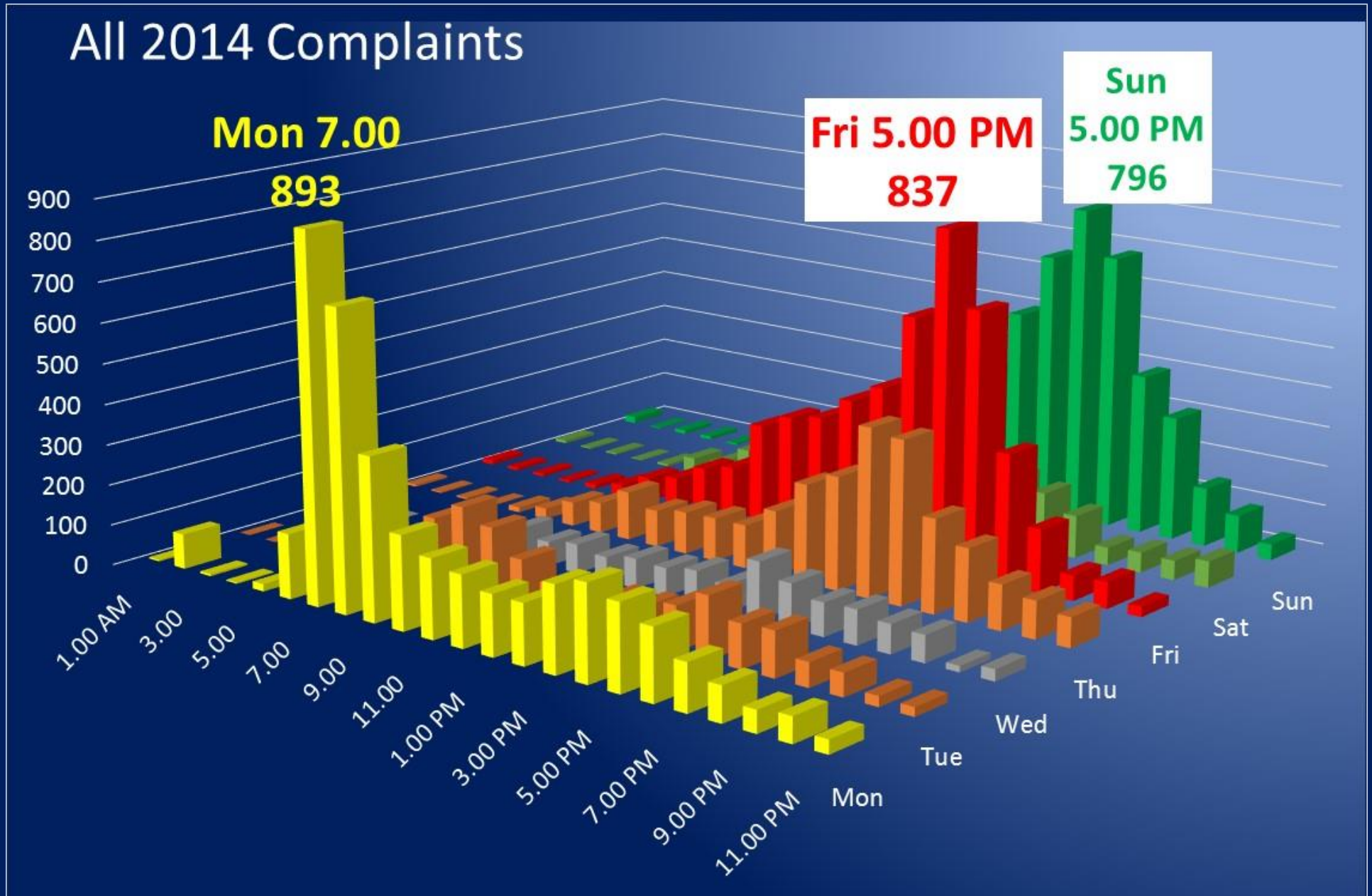
## TIME OF DAY & TYPE OF AIRCRAFT

Count of Date/Time of Noise Event

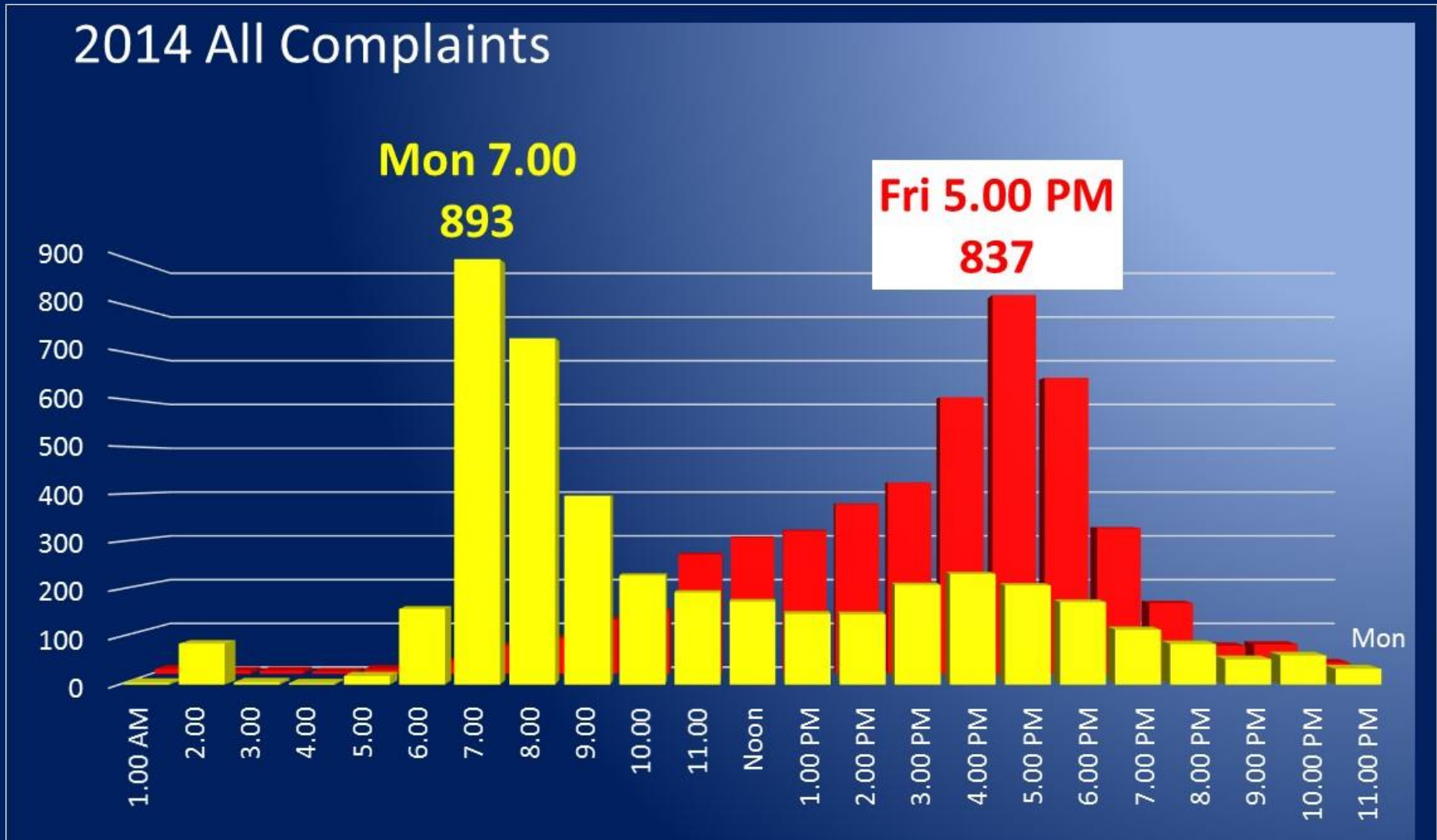
### 2014 Complaints by Hour



# PEAK COMPLAINTS: MON 7-8 AM; 5-6 PM FRI; 5-6 PM SUN



# MONDAYS VS FRIDAYS



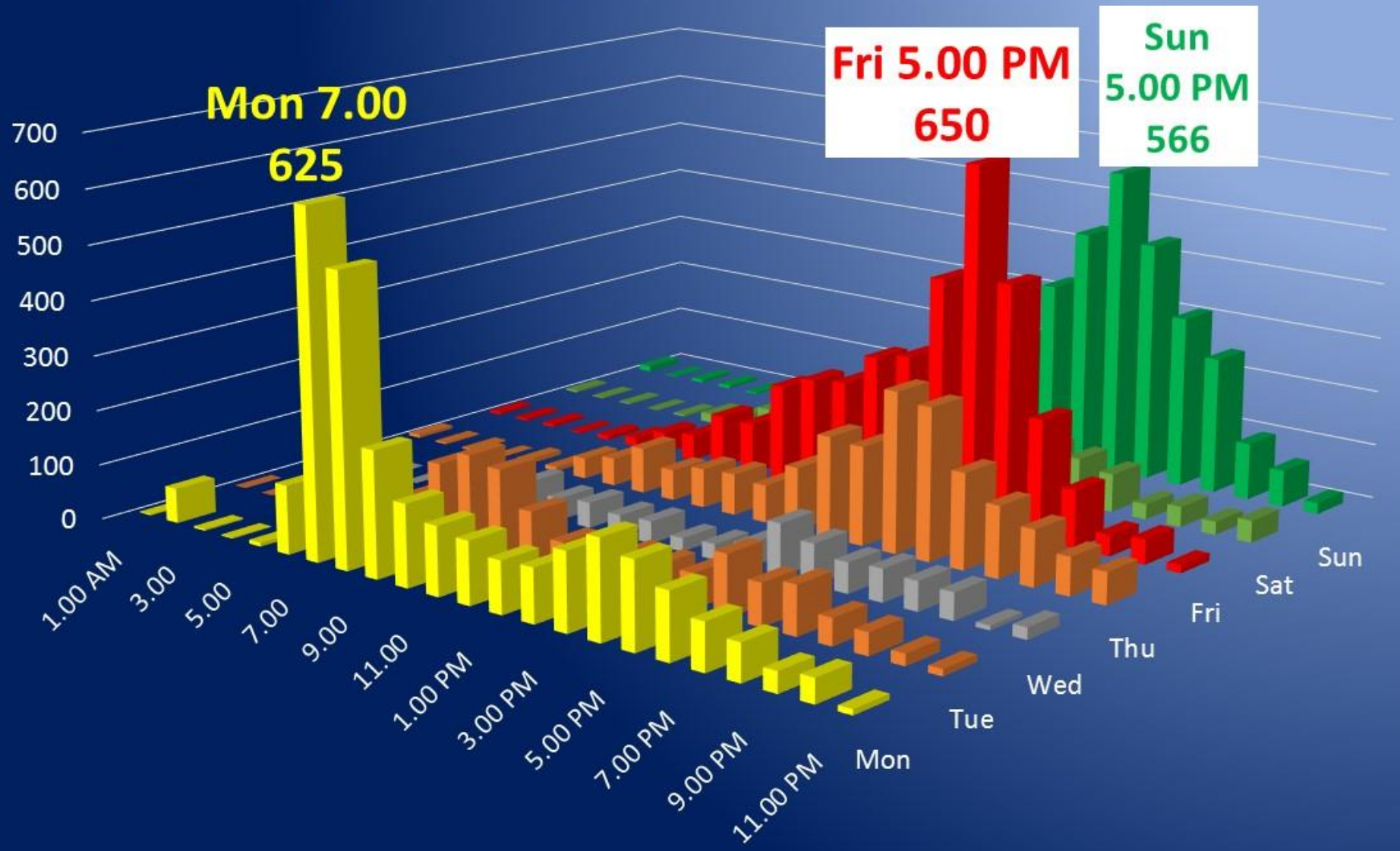
# MONDAYS VS SUNDAYS

## 2014 All Complaints



# HELICOPTERS

## 2014 Helicopter Complaints



# PEAK HELICOPTER LANDINGS DIFFER FROM COMPLAINTS

## 2014 Helicopter Landings

